

SP-5B10 Power Box Module

SP5000 SERIES



Features:

- Enhanced maintenance process.
- New modular design
- Change screen size with easy "snap on box module"
- Programmable with GP Pro EX v4.0 or greater or with BLUE software*
- Enhanced Connectivity: 2 Ethernet ports, 2 COM ports, 2 Type A, USB ports, 1 mini USB, AUX Interface

Performance Specifications

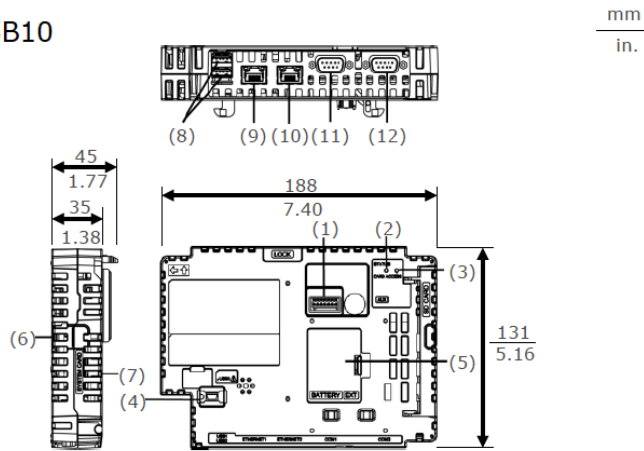
Models		SP-5B10 Power Box	
Part Number		PFXSP5B10	PFXSP5B10F0C
Operating System		Real Time OS	
Application Memory		SD card	
Backup Memory		NVRAM 512 KB	
Interfaces	Serial	COM1	RS-232C/422/485, Data Length: 7 or 8 bits, Stop Bit: 1 or 2 bits Parity: None, odd, or even, Data Transmission Speed: 2,400/1,200/115,200bps Connector: D-Sub 9 pin (plug)
		COM2	RS-232C/422/485, Data Length: 7 or 8 bits Stop Bit: 1 or 2 bits Parity: None, odd, or even Data Transmission Speed: 2,400(1,200)...115,200 bps, 187,500bps (MPI) Connector: D-Sub 9 pin (plug)
	Ethernet	Standard: IEEE802.3u/IEEE802.3ab, 10BASE-T/100BASE-TX/1000BASE-T Connector: Modular jack (RJ-45) x 2	
	USB	Type A (V2.0) x2, Mini B (V2.0) x1	
	SD Card	SD Card Slot (System) x 1, SD Card Slot (Storage) x 1	
	Audio Output	Speaker Output: 300mW (Rated Load: 8Ω, Frequency : 1kHz) LINE Output: Rated load: 10kΩ or more Connector: 2-piece terminal block (AUX) x 1	
*1: Field bus interface options will be launched around 4Q, 2014. *Blue software to be released in 2015			

General Specifications

Models		SP-5B10 Power Box	
Part Numbers		PFXSP5B10	PFXSP5B10F0C
Conformal Coating		-	Yes
Input Voltage		12Vdc (Supply from Display Module)	
Power Consumption		25W (max), 12.5W or less (when power is not supplied to external devices)	
Surrounding Air Temperature		0...60 °C [32...140 °F]	
Storage Temperature		- 20 to +60 °C (- 4 to +140 °F)	
Certifications		UL508, UL/c-UL, CSA C22.2 No142, CE, RoHS, GOST-R, KC	
Ratings		CSA C22.2No213, ANSI/ISA 12.12.01, EN61000-6-4, EN61000-6-2, Class 1 Div 2 Groups A, B, C and D	
Surrounding Air and Storage Humidity		10%...90% RH (Non condensing, wet bulb temperature 39 °C [102.2 °F] or less)	
Dust		0.1 mg/m3 (10-7 oz/ft3) or less (non-conductive levels)	
Pollution Degree		For use in Pollution Degree 2 environment	
Corrosive Gas		Free of corrosive gases	
Atmospheric Pressure (Operating Altitude)		800...1,114 hPa (2,000 m [6,561 ft] or lower)	
Vibration Resistance		IEC/EN 61131-2 compliant	
Shock Resistance		IEC/EN 61131-2 compliant	
Electrostatic Discharge Immunity		Contact Discharge Method: 6 kV (IEC/EN 61000-4-2 Level 3)	
Weight		0.9kg[1.98lb] or less	
External Dimensions		W188xH131xD45m[W7.4 x H5.16 x D1.77 in.]	
Warranty		Two (2) years	

External Dimensions

SP-5B10



- (1) Auxiliary Output/Speaker Output Interface (AUX) (2) Status LED (3) Card Access LED (4) USB (mini-B) Interface (5) Expansion Unit Interface Cover (EXT) (6) Storage Card Cover (7) System Card Cover (8) USB (Type A) Interface (9) Ethernet Interface (ETH1) (10) Ethernet Interface (ETH2) (11) Serial Interface (COM1) (12) Serial Interface (COM2)

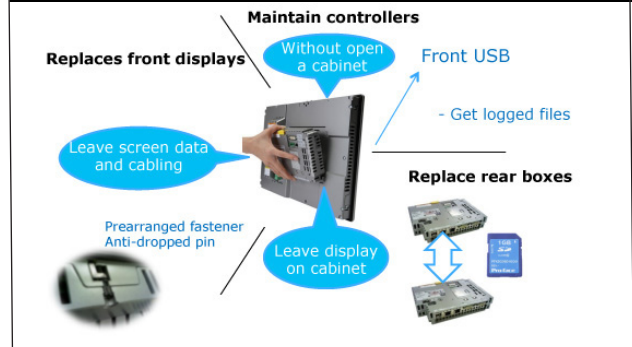
Ordering Information

Type	Model Numbers	Description
Power Box	PFXSP5B10	Ethernet I/F x 2, COM I/F x 2, USB A I/F x 2, USB mini-B I/F, SD Card I/F x 2, AUX I/F, Expansion Unit I/F
Power Box with Conformal Coating	PFXSP5B10FOC	Ethernet I/F x 2, COM I/F x 2, USB A I/F x 2, USB mini-B I/F, SD Card I/F x 2, AUX I/F, Expansion Unit I/F with conformal coating.

Options

Part Number	Product Name	Description
PFXZCDCNAUX1	AUX Connector	AUX connector required in case an external output is used (5 pcs/set).
PFXZCSD1GC61	SD Memory Card (1 GB)	SD Memory Card (1 GB, SLC, Class 6) for System Card

Modular Design and Easy Maintenance



Model Number Configuration

Box Module

PFXSP5 B **
(1) (2)

(1) Module Type		(2) Class	
B	BOX	40	Open
		10	Power

Display Module

PFXSP5 * 00 * * D
(3) (4) (5) (6)

(3) Size	(4) Resolution	(5) Touch Panel		(6) Power Supply	
7	15 inch	T	TFT	P	Premium (Multi)
6	12 inch	W	Wide TFT	A	Advanced (Analog)
5	10 inch				D DC
4	7 inch				

Pro-face America
Phone: 734.477.0600
Fax: 734.864.7347
www.profaceamerica.com

Customer Service Hotline: 800.289.9266

For more information

ACCESS

www.profaceamerica.com

Pro-face



California Proposition 65 Warning—Lead and Lead Compounds

Advertencia de la Proposición 65 de California—Plomo y compuestos de plomo

Avertissement concernant la Proposition 65 de Californie—Plomb et composés de plomb

⚠ WARNING: This product can expose you to chemicals including lead and lead compounds, which are known to the State of California to cause cancer and birth defects or other reproductive harm. For more information go to: www.P65Warnings.ca.gov.

⚠ ADVERTENCIA: Este producto puede exponerle a químicos incluyendo plomo y compuestos de plomo, que es (son) conocido(s) por el Estado de California como causante(s) de cáncer y defectos de nacimiento u otros daños reproductivos. Para mayor información, visite : www.P65Warnings.ca.gov.

⚠ AVERTISSEMENT: Ce produit peut vous exposer à des agents chimiques, y compris plomb et composés de plomb, identifiés par l'État de Californie comme pouvant causer le cancer et des malformations congénitales ou autres troubles de l'appareil reproducteur. Pour de plus amples informations, prière de consulter: www.P65Warnings.ca.gov.

All trademarks are the property of Schneider Electric SE, its subsidiaries, and affiliated companies.

Schneider Electric USA, Inc.
800 Federal Street
Andover, MA 01810 USA
888-778-2733
www.schneider-electric.us

Todas las marcas comerciales son propiedad de Schneider Electric SE, sus filiales y compañías afiliadas.

Importado en México por:
Schneider Electric México, S.A. de C.V.
Av. Ejercito Nacional No. 904
Col. Palmas, Polanco 11560 México, D.F.
55-5804-5000
www.schneider-electric.com.mx

Toutes les marques commerciales sont la propriété de Schneider Electric SE, ses filiales et compagnies affiliées.

Schneider Electric Canada, Inc.
5985 McLaughlin Road
Mississauga, ON L5R 1B8 Canada
800-565-6699
www.schneider-electric.ca